

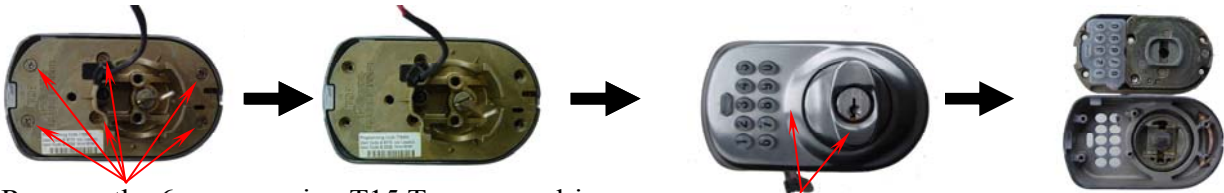


Remotely Control Access to Your Rental Properties

Replace electronic board for BE365

It's as easy as 1-2-3-4 to replace the electronic board for BE365.

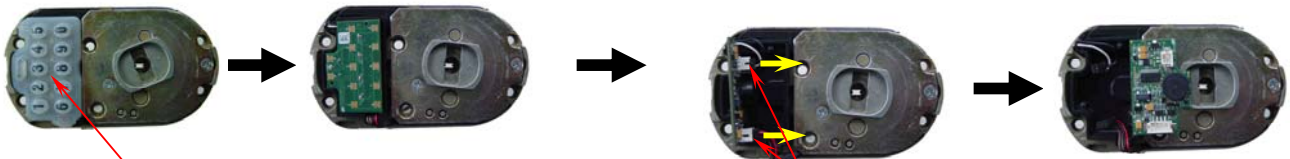
Step 1 – Remove the knob and front cover



Remove the 6 screws using T15 Torx screwdriver

Remove the knob and front cover

Step 2 – Disconnect the old electronic board

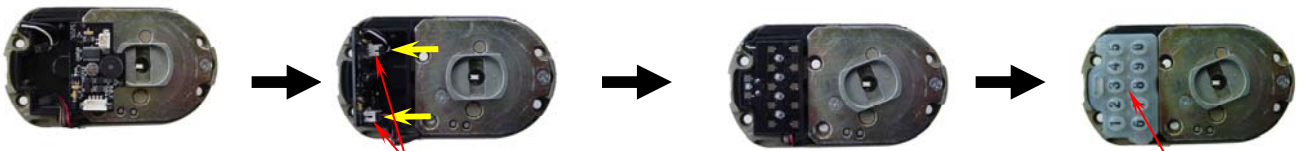


Remove the rubber keypad

Disconnect the two connectors

Note: Please hold the connector, NOT wires to disconnect!

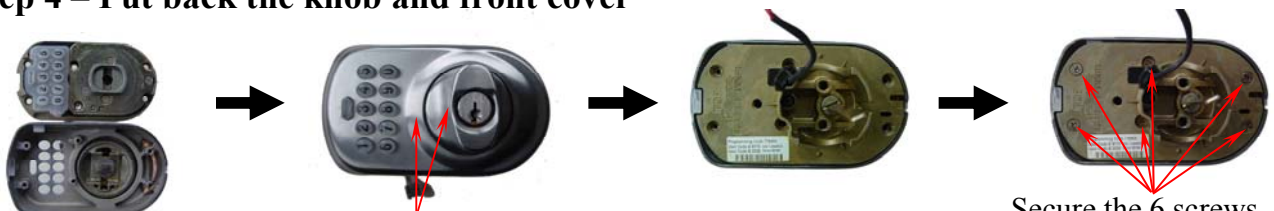
Step 3 – Connect the new electronic board



Connect the two connec

Put back the rubber keypad

Step 4 – Put back the knob and front cover



Put back the knob and front cover

Secure the 6 screws

www.eRentalLock.com

Vancouver, BC, Canada
www.eRentalLock.com