



Control property rental time remotely, securely, economically, and easily!



eRL-BE365 and eRL-FE595 Introduction

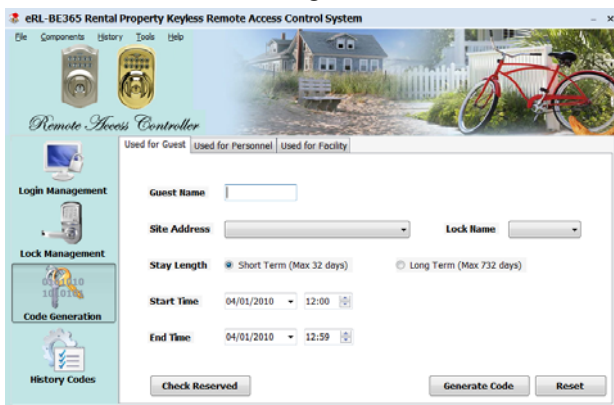
For over 85 years Schlage has provided homeowners with innovative quality security products. Today, Schlage offers home security solutions from a wide selection of mechanical and electronic security locks and accessories in touch with modern lifestyles.

The Schlage BE365 and FE595 electronic keypad locks have earned a prestigious Best Buy rating. They meet ANSI Grade 2 standard, making them the most secure and durable keypad locks in the residential marketplace. They feature a patented commercial-grade clutching motor drive electronic mechanism that is tested to one million cycles.

eRentalLock (www.arentallock.com) Rental Property Keyless Remote Access Control System is specially designed to meet vacation rental owner or manager unique needs to remotely manage their vacation rental properties. It uses revolutionary time sensitive Access Code, which is generated by user's own computer or online management website, to allow vacation rental owners or managers to instantly and remotely grant access to their rental properties for specific periods of time, without the need for a key or keycard. The eRentalLock has been on the market for 2 years, and has been used widely by vacation rental owners and managers around the world.

Combined the Schlage top quality BE365 and FE595 keypad locks with the eRentalLock top remote access control technologies, the eRL-BE365 and eRL-FE595 eRentalLocks are the most durable, reliable, and economic remote access control solution for vacation rental home.

Free PC version Management Software



Free Website Management Program



www.eRentalLock.com

Vancouver, BC, Canada
info@eRentalLock.com



Control property rental time remotely, securely, economically, and easily!

eRL-BE365 and eRL-FE595 PC Software and Website Program Features

Operation System	Windows OS for PC version program. No limitation for web version program.
Security	<ol style="list-style-type: none"> 1. Login password protection. 2. Automatically logout.
Lock Management Capacity	Manage up to one million Locks.
Access Code Trace Capacity	Trace up to one million Access Codes.
Access Code Generation	<p>Used for Guest:</p> <ol style="list-style-type: none"> 1. Short term stay - Control stay length from one hour to 32 days, check-in/check-out time at any hour of the day. 2. Long term stay - Control stay length from 32 days to 732 days (2 years). <p>Used for Personnel:</p> <ol style="list-style-type: none"> 1. Short term staff - Control employment term from one day to 32 days, daily start/end work time at any hour of the day. 2. Long term staff - Control employment term from one month to 24 months (2 years), daily start/end work time at any hour of the day. 3. One time use code - Control the external service people to access the property only one time on appointed day. <p>Used for Facility:</p> <ol style="list-style-type: none"> 1. Short term use - Control use term from one day to 32 days, daily open/close time at any hour of the day. 2. Long term use - Control use term from one month to 24 months (2 years), daily open/close time at any hour of the day. 3. One time use code - Control the external service people to access the facility only one time on appointed day. <p>Used for Group:</p> <p>One Group Access Code to access all locks which are classified in the same Group.</p>
Reservation Check	Click Check Reserved button to show all reservation list.
Expired Access Code	<ol style="list-style-type: none"> 1. Automatically display expired access codes in real time. 2. One click to delete all expired access codes for a selected lock.
Lock Battery Replacement Reminder	Automatically remind Lock battery replacement.
Daylight Saving Time	Automatically adjust Daylight Saving Time.
Database Backup/Restore	Backup/Recover tools to protect database if computer broke down.

www.eRentalLock.com

Vancouver, BC, Canada
info@eRentalLock.com



Control property rental time remotely, securely, economically, and easily!

eRL-BE365 & eRL-FE595 Lock Features

Certification	Grade 2 ANSI/BHMA certified for high humidity and durable use.
Unlock Way	<p>Access Code:</p> <ol style="list-style-type: none"> 1. Software-generated 10-digit Access Code. 2. User-created 3-6 digit Personalized Code. 3. No time-related Private Master Code. <p>Backup Key: Backup keys for emergency override, 5-pin, C-section.</p>
User Code Capacity	<p>If using software-generated 10-digit access codes: Unlimited software-generated 10-digit access codes can be used to access at the same time.</p> <p>If using user-created 3-6 digit Personalized Codes: Up to 40 user-created 3-6 digits Personalized Codes can be remembered by the lock and used to access at the same time.</p>
Unwanted Code	Up to 20 valid Access Codes can be disabled at the same time by Private Master Code or another valid Access Code.
Turn Lock Feature (For eRL-BE365 only)	<p>When enabled: One touch at the keypad to lock the lock from outside.</p> <p>When disabled: A valid code must be entered at the keypad to lock the lock from outside.</p>
Thumbturn Function (For eRL-FE595 only)	<p>When enabled: Turn the Thumbturn can enable/disable exterior lever.</p> <p>When disabled: Turn the Thumbturn can't enable/disable exterior lever.</p>
Vacation Mode	<p>When set in this mode: All Access Codes and Personalized Codes are disabled.</p> <p>Leave this mode: Unlock by Private Master Code to leave this mode.</p>
Keypad Beeper	Keypad Beeper can be enabled or disabled by keypad command.
Anti Code Guessing	The keypad is disabled for 30 seconds if incorrect code is entered 3 times in row.
Keypad	Silicone rubber, wear-resistant buttons with blue LED backlight.
Turn Knob	Vandal resistant free-spinning deadbolt turn with patented commercial grade clutching motor drive, tested to one million cycles.
Body	All-metal chassis and escutcheons.
Power	9V Battery Operated – 3 year average life with low battery warning.
Operation Temperature	-22 ° F (-30°C) - 140 °F (60 °C)



www.eRentalLock.com

Vancouver, BC, Canada
info@eRentalLock.com



Control property rental time remotely, securely, economically, and easily!

eRL-BE365 Keypad Commands

Change PMC	Press PMC → Press SCHLAGE → Press 0 → Press SCHLAGE → Press New PMC → Press SCHLAGE → Repeat New PMC
Set Date/Time	Press PMC → Press SCHLAGE → Press 1 → Press SCHLAGE → Press Date/Time YYMMDDHHMM
Delete Unwanted AC By PMC	Press PMC → Press SCHLAGE → Press 2 → Press SCHLAGE → Press Unwanted AC
Unlock/Disable Vacation Mode	Press PMC → Press SCHLAGE → Press 3 → Press SCHLAGE
Change GMC	Press PMC → Press SCHLAGE → Press 4 → Press SCHLAGE → Press New GMC → Press SCHLAGE → Repeat New GMC
Erase Memory	Press PMC → Press SCHLAGE → Press 5 → Press SCHLAGE
Turn Beeper On/Off	Press PMC → Press SCHLAGE → Press 6 → Press SCHLAGE
Enable/Disable Turn Lock Feature	Press PMC → Press SCHLAGE → Press 7 → Press SCHLAGE
Enable Vacation Mode	Press PMC → Press SCHLAGE → Press 8 → Press SCHLAGE
Delete Unwanted AC By AC	Press AC → Press SCHLAGE → Press Unwanted AC
Unlock By AC	Press AC
Create PC	Press AC → Press SCHLAGE → Press PC → Press SCHLAGE
Unlock By PC	Press PC → Press SCHLAGE
Restore All Factory Settings	 → Press SCHLAGE →  → Hold SCHLAGE

PMC - Private Master Code, 6 digits.

GMC - Group Master Code, 6 digits.

AC - Access Code, 10 digits.

PC - Personalized Code, 3-6 digits.

www.eRentalLock.com

Vancouver, BC, Canada
info@eRentalLock.com



Control property rental time remotely, securely, economically, and easily!

eRL-FE595 Keypad Commands

Change PMC	Press PMC → Press SCHLAGE → Press 0 → Press SCHLAGE → Press New PMC → Press SCHLAGE → Repeat New PMC
Set Date/Time	Press PMC → Press SCHLAGE → Press 1 → Press SCHLAGE → Press Date/Time YYMMDDHHMM
Delete Unwanted AC By PMC	Press PMC → Press SCHLAGE → Press 2 → Press SCHLAGE → Press Unwanted AC
Unlock/Disable Vacation Mode	Press PMC → Press SCHLAGE → Press 3 → Press SCHLAGE
Change GMC	Press PMC → Press SCHLAGE → Press 4 → Press SCHLAGE → Press New GMC → Press SCHLAGE → Repeat New GMC
Erase Memory	Press PMC → Press SCHLAGE → Press 5 → Press SCHLAGE
Turn Beeper On/Off	Press PMC → Press SCHLAGE → Press 6 → Press SCHLAGE
Enable/Disable Thumbturn Function	Press PMC → Press SCHLAGE → Press 7 → Press SCHLAGE
Enable Vacation Mode	Press PMC → Press SCHLAGE → Press 8 → Press SCHLAGE
Delete Unwanted AC By AC	Press AC → Press SCHLAGE → Press Unwanted AC
Unlock By AC	Press AC
Create PC	Press AC → Press SCHLAGE → Press PC → Press SCHLAGE
Unlock By PC	Press PC → Press SCHLAGE
Restore All Factory Settings	→ Press SCHLAGE → → Hold SCHLAGE

PMC - Private Master Code, 6 digits.

GMC - Group Master Code, 6 digits.

AC - Access Code, 10 digits.

PC - Personalized Code, 3-6 digits.

www.eRentalLock.com

Vancouver, BC, Canada
info@eRentalLock.com